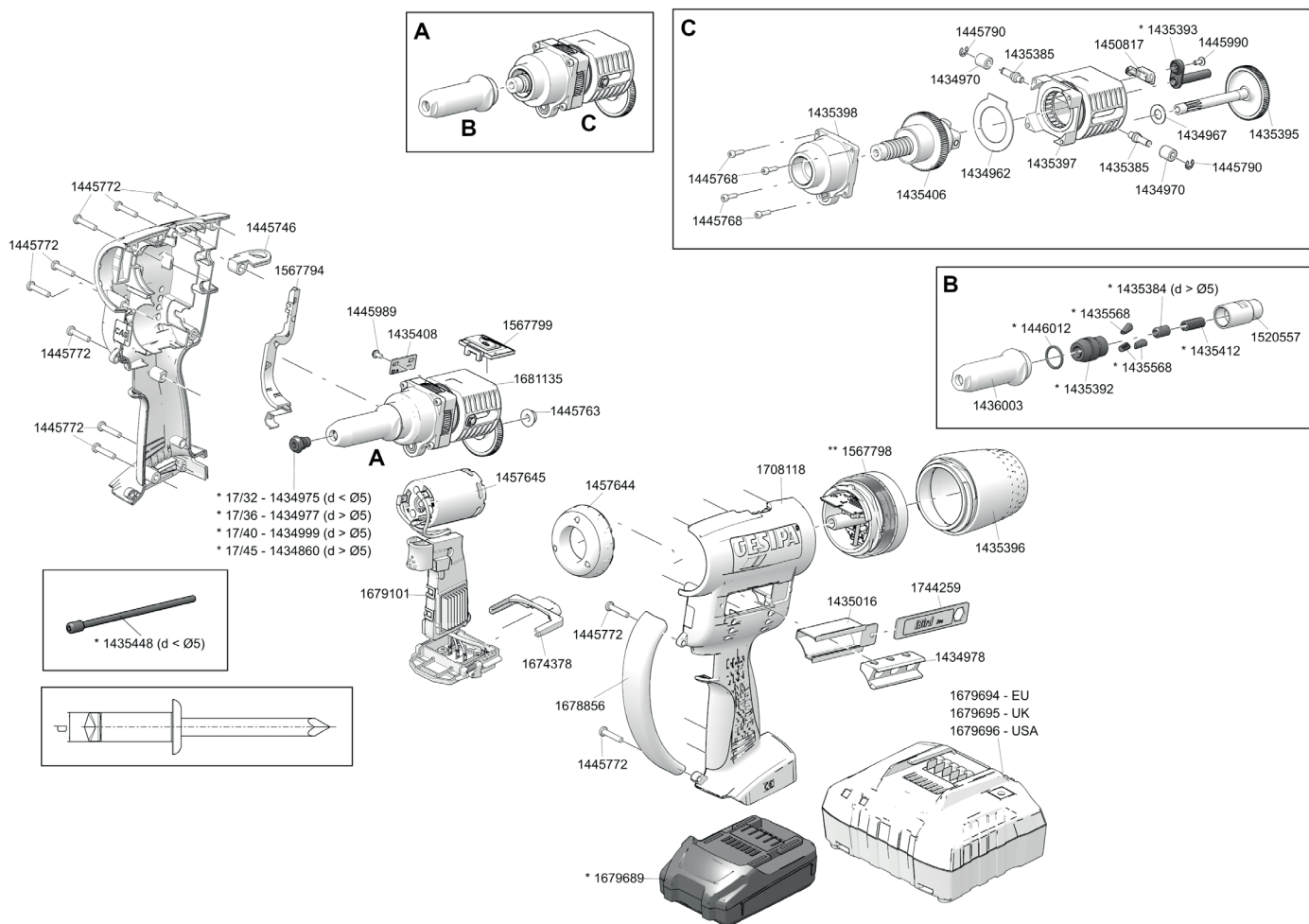


BATTERY POWERED BLIND RIVETING TOOLS


iBird® Pro with new CAS technology - from May 2021




* Wearing parts

BATTERY POWERED BLIND RIVETING TOOLS

iBird® Pro with new CAS technology - from May 2021

No.	
143 4860*	Nosepiece 17/45
143 4962	Washer
143 4967	Washer
143 4970	Sintered metal roller
143 4975*	Nosepiece 17/32
143 4977*	Nosepiece 17/36
143 4978	Magazine insert
143 4999*	Nosepiece 17/40
143 5016	Nosepiece magazine
143 5384*	Jaw Pusher (> Ø 5)
143 5385	Pin
143 5392*	Jaw housing
143 5393*	Channel tube
143 5395	Pinion shaft Pro Gold Edition
143 5396	Spent mandrel container, complete
143 5397	Bearing cage
143 5398	Bearing, complete
143 5406	Ball screw drive
143 5408	Plate
143 5412*	Spring
143 5448*	Jaw Pusher (< Ø 5)
143 5568*	Jaws (3-part)
143 6003	Steel head sleeve
144 5746	Hanger Pro Gold Edition
144 5763	Sintered-metal bushing
144 5768	Screw
144 5772	Screw long
144 5790	Lock washer

No.	
144 5989	Screw
144 5990	Screw
144 6012*	O ring
145 0817	Magnetic holder
145 7644	Light, complete
145 7645	Motor complete Pro Gold Edition
152 0557	Adapter
174 4259	Key iBird® Pro complete
156 7794	Cable duct
156 7798**	iBird module
156 7799	NFC module
167 9689*	Battery 2.0 Ah
167 4378	Locking slider
167 8856	Tool bar
167 9101	E control
170 8118	Housing
168 1135	Drive unit
167 9694	Charger EU
167 9695	Charger UK
167 9696	Charger USA

* Wearing parts

** exchange only by GESIPA®



You will find detailed nosepiece allocation tables from page 134.