

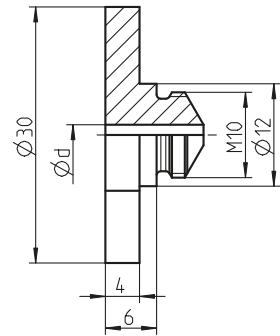
## DELIVERY TIMES ON REQUEST!

### PLATE NOSEPIECES P WITHOUT CUT-OUT

for SN2, HN 2, PH 1, PH 2, PH Axial, PH 2000, Bird series, Bird Pro series, TAURUS®

Ø	Material	Ø d	Designation	HN 2, PH 1, PH 2, PH Axial, PH 2000	Designation	TAURUS® Bird series Bird Pro series SN 2
				No.		No.
3 and 3.2	Alu, Cu, Stahl, Stainless steel, Stinox, Alu/Alu, PG-Alu, PG-Steel	2.4	P 16/24	<b>145 6649</b>	P 17/24	<b>145 7335</b>
4	Alu, Cu, CAP®-Alu, CAP®-Cu	2.4	P 16/24	<b>145 6649</b>	P 17/24	<b>145 7335</b>
4	Steel, Alu/Alu, PG-Alu	2.7	P 16/27	<b>145 6650</b>	P 17/27	<b>145 7336</b>
4	Stainless steel, Stinox, PG-Steel	3.0	P 16/29	<b>145 6651</b>	P 17/29	<b>145 7337</b>
4.8 and 5	Alu, CAP®-Alu, CAP®-Cu, PG-Alu	3.0	P 16/29	<b>145 6651</b>	P 17/29	<b>145 7337</b>
4.8 and 5	Steel, Alu/Alu	3.35	P 16/32	<b>145 6657</b>	P 17/32	<b>145 7338</b>
4.8 and 5	Stainless steel, Stinox, PG-Steel	3.6	P 16/36	<b>145 6656</b>	P 17/36	<b>145 7339</b>
6	Alu	3.6	P 16/36	<b>145 6656</b>	P 17/36	<b>145 7339</b>

For countersunk head blind rivets

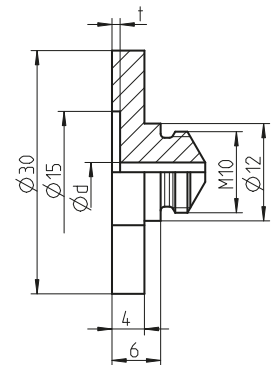


### PLATE NOSEPIECE PA WITH CUT-OUT

for SN2, HN 2, PH 1, PH 2, PH Axial, PH 2000, Bird series, Bird Pro series, TAURUS®

Ø	Material	Ø d	Designation	t	HN 2, PH 1, PH 2, PH Axial, PH 2000	Designation	t	TAURUS® Bird series Bird Pro series SN 2
					No.			No.
3 and 3.2	Alu, Cu, Stahl, Stainless steel, Stinox, Alu/Alu, PG-Alu, PG-Steel	2.4	PA 16/24	1.0	<b>145 6659</b>	PA 17/24	1.0	<b>145 7330</b>
4	Alu, Cu, CAP®-Alu, CAP®-Cu	2.4	PA 16/24	1.0	<b>145 6659</b>	PA 17/24	1.0	<b>145 7330</b>
4	Steel, Alu/Alu, PG-Alu	2.7	PA 16/27	1.0	<b>145 6660</b>	PA 17/27	1.0	<b>145 7331</b>
4	Stainless steel, Stinox, PG-Steel	3.0	PA 16/29	1.1	<b>145 6661</b>	PA 17/29	1.1	<b>145 7341</b>
4.8 and 5	Alu, CAP®-Alu, CAP®-Cu, PG-Alu	3.0	PA 16/29	1.1	<b>145 6661</b>	PA 17/29	1.1	<b>145 7341</b>
5	Al-large flange K 11 and K 14	3.0	PA 16/29 K	1.5	<b>145 6652</b>	PA 17/29 K	1.5	<b>145 7332</b>
4.8 and 5	Steel, Alu/Alu	3.35	PA 16/32	1.1	<b>145 6653</b>	PA 17/32	1.1	<b>145 7333</b>
4.8 and 5	Stainless steel, Stinox, PG-Steel	3.6	PA 16/36	1.1	<b>145 6662</b>	PA 17/36	1.1	<b>145 7342</b>
6	Alu	3.6	PA 16/36	1.3	<b>145 6666</b>	PA 17/36	1.3	<b>145 7334</b>

For standard blind rivets (dome head)

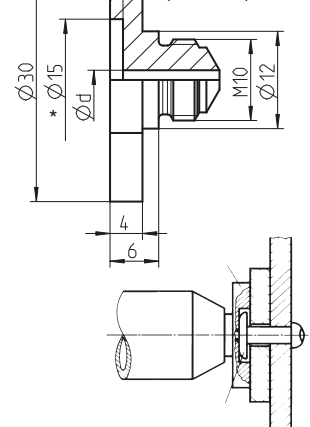


### PIVOT NOSEPIECES PG (for the production of articular rivet connections)

for SN2, HN 2, PH 1, PH 2, PH Axial, PH 2000, Bird series, Bird Pro series, TAURUS®

Ø	Material	Ø d	Designation	t	HN 2, PH 1, PH 2, PH Axial, PH 2000	Designation	t	TAURUS® Bird series Bird Pro series SN 2
					No.			No.
3 and 3.2	Alu, Cu, Steel, Stainless steel, Stinox, Alu/Alu, PG-Alu, PG-Steel	2.4	PG 16/24	1.6	<b>145 6663</b>	PG 17/24	1.6	<b>143 5002</b>
4	Alu, Cu, CAP®-Alu, CAP®-Cu	2.4	PG 16/24	1.6	<b>145 6663</b>	PG 17/24	1.6	<b>143 5002</b>
4	Steel, Alu/Alu, PG-Alu	2.7	PG 16/27	1.6	<b>145 6664</b>	PG 17/27	1.6	<b>143 5003</b>
4	Stainless steel, Stinox, PG-Steel	3.0	PG 16/29	1.6	<b>145 6655</b>	PG 17/29	1.6	<b>143 5007</b>
4.8 and 5	Alu, CAP®-Alu, CAP®-Cu, PG-Alu	3.0	PG 16/29	1.6	<b>145 6655</b>	PG 17/29	1.6	<b>143 5007</b>
5	Al-large flange K 11 and K 14	3.0	PG 16/29 K	2.0	<b>145 6658</b>	PG 17/29 K	2.0	<b>143 5004</b>
5	Al-large flange K 16	3.0	-	-	-	PG 17/29 K16*	2.0	<b>143 5009</b>
4.8 and 5	Steel, Alu/Alu	3.35	PG 16/32	1.6	<b>145 6654</b>	PG 17/32	1.6	<b>143 5005</b>
4.8 and 5	Stainless steel, Stinox, PG-Steel	3.6	PG 16/36	1.6	<b>145 6665</b>	PG 17/36	1.6	<b>143 5006</b>
6	Alu	3.6	PG 16/36	2.0	<b>146 4002</b>	PG 17/36	2.0	<b>145 7340</b>

Pivot nosepiece PG (dimensions compare plate nosepiece „PA“)



\*Please note:  
For PG 17/29 K16,  
the Ø is 17, not 15.